



M&M Professionals

It all starts with a thought..

Sublimation

**BUSINESS, PROMOTIONAL, CORPORATE, TRADES, TEAMS,
SPORT, FISHIN', MANUFACTURING, MINING, MARKETING, EVENTS, CLUBS,
HOSPITALITY, SERVICES, EDUCATION....**

M&M Professionals

info@mmprofessionals.com.au
1300 665 256
0411 135 397
mmprofessionals.com.au

If you're rocking an illustrated shirt or any other colourful illustrated garment, remember that fashion is more than just fabric, and while that's still so important, when combined, it's a powerful form of expression!

The message is



Here is a step by step explanation.....

it's all about the message...



M&M Professionals

info@mmprofessionals.com.au
1300 665 256
0411 135 397
mmprofessionals.com.au



it's all about the message...

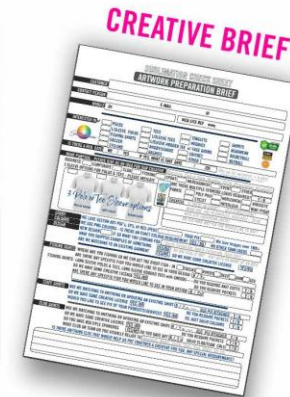
What we need from you....

We need your detailed Brief; this helps our Designers come up with ideas to make your thoughts become reality..... We also offer a Designer On-line, it's a Click/Click Colour change option. We also need a delivery date?

Either way, our Designers love Vector Art. They focus on the overall composition, adding the text, graphics, elements and then creating individual images, often standalone or incorporated into designs..

We also love PMS Colours.

In summary, Vector Art offers us clean, scalable images—essential for today's diverse design needs!





What we give you back....

From your detailed Brief and if you have supplied an image, we always include that in a Visual...

Then we complete 3 other Options using our creativity and knowing what works in illustrated apparel ...

You can take any elements off any of the Options we send through, to make Version II

And so on.... up to 4 revisions
Did we say we love Vector Art & PMS Colours?

To summarise, let us create for you.....

it's all about the message...





What we offer



12 FABRICS - 8 ANTI-MICROBIAL



Carefully constructed apparel and headwear to reinforce and build on your brand....

12 x Fabric options, 4 x of which carry the Global Recycled Standard Certification...

All our Air8™ Fabrics are yarn treated anti-microbial - anti-bacterial for *wash back* lifelong freshness.

Orders can be mixed Mens, Ladies and Kids, the minimum Order is only 10 Pieces.

In summary, our garments will never wear out.....

4 RECYCLED ANTI-MICROBIAL



SHORT SLEEVE 	LONG SLEEVE 	HAWAIIAN/CREW 	SHORT SLEEVE 	LONG SLEEVE
HOODED SNOOD TEE 	SINGLETs 	SHORTS 	TRUCKERS & BUCKETS 	SOX
HOODIES 	JACKETs 	NETBALL 	BASKETBALL 	SOCCER
UNION/LEAGUE 				RASHIES





Step by Step

it's all about the message...

Step 1 Is to create a memorable garment that encapsulates 'The Message'.

In summary, let us create for you.....
Key elements we consider to make it effective:

Information: We are selective with the information you include, highlighting essential details from your Brief for your product, event, or offer. We research the company, business, sport or event.

Headlines: Headline art is short and impactful, we use the KISS principle: *"Keep It Short and Simple,"* by crafting a design that captures attention and conveys your message effectively.- It's all about 'The Message'.

Visuals: Our eye-catching imagery matters, where possible we use high-quality photos, relevant illustrations, or graphics.

Remember, a successful design engages viewers quickly and leaves a lasting impact!





Step 2

Step 2 Refines the Visual Options involving you in the Design process

From your continued feedback, we work through the changes with you to ensure that you get a memorable garment or headwear.

We have a Once Only Set Up Fee (not chargeable on Repeats) and we give you up to 4 Versions to get it right.

After 4 Versions, we really need to talk 😊

If you Repeat your Job but need Logo amendments or additions, we do this at no cost, it's all part of the service..

In summary, using your ideas and our expertise, you'll get a garment that enhances your brand, makes a statement and gets 'The Message' across.

it's all about the message...





Step 3

Step 3 When you've settled on the best possible option to get the Design into reality, we prepare the 'Print File'...

This Multi-Purpose Document contains everything we need to make your Design come to life...Design, Art, Logo, Sizes- the Scale is 1:1 so can see actual sizes of Logos

This includes :
Artwork laid up Panel by Panel showing Front & Back, both Sleeves and if a Polo, the Collar and Placket.

BLOODY IMPORTANT NOTE : We endeavour to make all necessary changes on the 'Paper' Document before we submit to the Factory. Because any changes after the Job has gone in can incur costs so getting it right here, is paramount to save you your time and your money.

In summary, this is the last Design Step before the Factory starts the printing so it's essential to get it right here...

IMPORTANT NOTICE 1

THE ARTWORK/DESIGN YOUR CUSTOMER HAS APPROVED IS ATTACHED. THIS IS THE FACTORY 'PRINT FILE'. PLEASE SEND TO YOUR CUSTOMER

IF YOU/THEY ARE NOT SURE THAT THIS IS 'PRINT READY', PLEASE ADVISE US RIGHT NOW....TO MAKE ANY CHANGES?

WHEN WE GET TO THE NEXT STAGE WHICH IS THE STRIKE OFF PIX & WE HAVE TO MAKE CHANGES TO THE DESIGN, THERE WILL BE A \$100.00 'REDO' FEE, INVOICED SEPARATELY.

WE ENDEAVOUR TO EXECUTE A HIGH DEGREE OF PROFESSIONALISM WITH OUR FACTORIES. EFFECTIVELY WE WILL BE STARTING AGAIN - PLEASE MAKE ANY CHANGES WHILE THE JOB IS AT THIS STAGE. SHOULD THIS BE A 'PRIVATE LABEL' or FACTORY ERROR, OBVIOUSLY - NO CHARGE.

Thanks for your consideration & understanding

PC-256043
GARMENT : LONG INSET SLEEVE POLO

DATE : 26/6/25
JOB : MANANGOORA MEN
SIZE : L PG 1/2
PG 2/2 = NAMES

NECK TAPE
BLACK
WHITE

ADD CONCEALED POCKET
MID-LEFT LOGO

FRONT BACK

PLACKET

COLLAR
RIGHT LEFT

ARTWORK INFO
PMS 7420 BLACK PMS 1160
ALL CMYK

GARMENT INFO
FABRIC : DBHT HORIZONTAL
BUTTONS : BLACK

NECK LABEL INFO
 WOVEN LOOP
 BLACK

NOTES:
* EXISTING NECK LABEL
* INTERNAL CONCEALED POCKET
* NAME'S RIGHT CHEST NYD

MEN	XS	S	M	L	XL	2XL	3XL	4XL	5XL	6XL	#	TOTAL
-	-	-	-	-	-	-	-	-	-	-	-	-

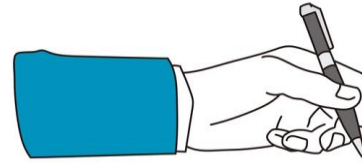
COLOUR MATCHING
PLEASE SEE TO IT THAT YOU CHECK THE COLOURS OF THE PRINTED SAMPLES CAREFULLY. WE CAN NOT BE RESPONSIBLE FOR ANY COLOUR MISMATCHING OR DISCREPANCY BETWEEN THE PRINTED SAMPLES AND THE FINAL PRODUCT. WE WILL TRY TO MATCH THE COLOURS AS CLOSELY AS POSSIBLE BUT WE CANNOT GUARANTEE A PERFECT MATCH. WE WILL TRY TO MATCH THE COLOURS AS CLOSELY AS POSSIBLE BUT WE CANNOT GUARANTEE A PERFECT MATCH. WE WILL TRY TO MATCH THE COLOURS AS CLOSELY AS POSSIBLE BUT WE CANNOT GUARANTEE A PERFECT MATCH.

SIGNED BY : _____
NAME : _____
ON BEHALF OF : _____



Step 4

Step 4 Before we send the Job to the Factory, from you - we need to have the Print File PDF “Signed Off” and the Deposit Paid.

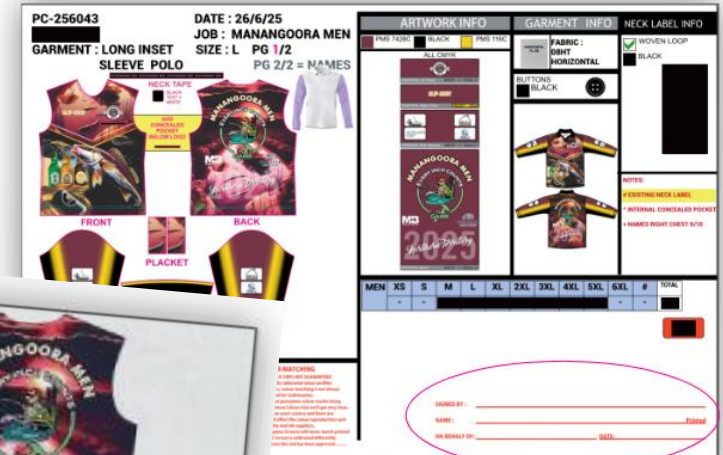
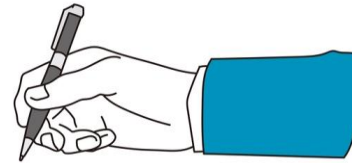


This is a Double Commitment between you, us and the Factory, when the Deposit is paid, the Job is sent to the Factory, the clock starts ticking....

Step 5

Step 5 Within 7-10 days, we will send you “Strike Off” Pictures, these are prepared from the Print File. We get you to “Sign Off”.

These Pictures are actual and show what the Print Files are for. **Any changes to the Design**, (other than ours or a Factory error or mishap) can incur a surcharge, that's why we endeavour to get it right before submitting these Jobs for printing. **If they mirror our Print Files**, we hit the 'go button'....





Step 6

Step 6 Construction starts in high specification Factories.

The Print Files are completed for Printing, it's here we individually add Names or Numbers (if required), we add Logos to all of the various sizes, Kids sizes 4-16, Ladies sizes 6-26 and Mens from XS-5XL.

We also offer Mens Sizing up to 10XL and Ladies up to Size 32, all at an extra cost.

All garments are Laser Cut to assist in preventing fraying and to ensure a consistent size. All garments are physically Made by Hand.

NOTE : Our Factory KPI (Key Performance Indicator) is to turn your Orders around within 4 weeks of submitting the Design for collection by International Carriers. UPS Air FR8 is included in the garment cost

In summary, we collate our Orders, shipping by UPS- on average this can be a 3-5 day service but if you are pushed for a deadline, we also have an Express Service for a small extra charge.





Step 7

Step 7 Garments are received, QC & counted to ensure your Order is as requested.

Quality Controlled Inspections are followed by Photos of each design.

Garments are Bagged or Boxed and despatched to you.....

In summary, we say 5-5.5 weeks for normal delivery.

Step 8

We have achieved using your ideas and our expertise, receiving a garment that enhances your brand.



When you work with us, you're working with people who understand the business of building brands, not just making apparel. We work with you as a design, production house and marketing partner first, ensuring every garment sublimated or decorated stock becomes a vehicle for your message, your identity, and you and your story. Quality isn't an add-on- it's the baseline that protects and elevates your value.



Technical + Trust-Building

Our Hi-Viz range is built for crews who need to be seen, protected, and comfortable all day.

Genuine fluorescence inks deliver maximum visibility, while our anti-bacterial treated yarn keeps the garments fresher for longer, shift after shift. Lightweight, durable, and compliant with modern worksite expectations.

Turn your fishing crew into a brand. Our fishing shirts combine UV protection, vibrant sublimation prints, and durable construction, ideal for clubs, events, and merchandise ranges that need to look sharp and last.

Your colours, your artwork, your story on a premium garment.



Our range bridges performance fabrics with lifestyle silhouettes, giving you garments that look sharp and wear even better. Moisture-wicking jerseys, structured varsity cuts, lightweight resort shirts, moto-inspired workwear, all engineered with durability, colourfastness, and modern fit profiles. Whether you're outfitting a team, a club, a brand, or a full retail line, we deliver consistency across categories without losing personality.



Engineered for the days that don't play nice.

Our Softshells and Puffers blend weather resistance, warmth, and modern streetwear silhouettes, built for crews who want performance without looking like they're on a hiking brochure.

From geometric prints to bold colour blocking, every piece is designed to stand out while standing up to the elements.

Hoodies in 2 weights, brushed inner or smooth, Jackets and Sleeveless Hoods.

Bold colours. Big graphics. Kangaroo pockets that actually work. Hoodies and jackets built for crews who want to look the part.



Grassroots to elite. Social to serious. If it's a team, we can kit it. Every sport. Every age group. Every team story. From weekend warriors to elite squads, we outfit every level of the game. Uniforms built for performance, identity, and pride, whether you're chasing trophies, building culture, or just showing up for the love of it. Uniforms that do more than match, they unite. Perfect for clubs, gyms, workplaces, events, and any crew that wants to build identity and momentum. Bold colours, coordinated looks, and merch that people actually want to wear.



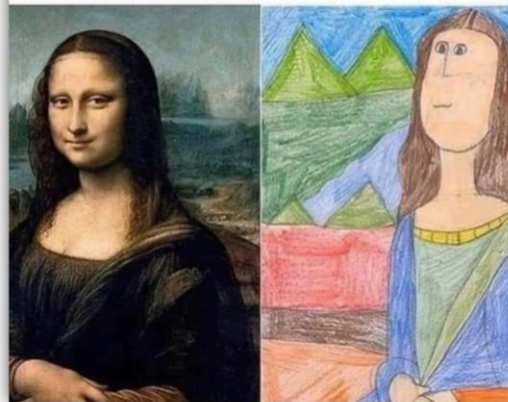


When the client says can you do it cheaper...



Remember

There's always someone who charges less.



When your client asks if you can do it cheaper

